



**38th SEASON**  
**NEW YORK STATE**  
**MUSIC CAMP**  
**JULY 1 THROUGH**  
**AUGUST 11, 1984**

**OPERATED BY**  
**HARTWICK COLLEGE**  
**ONEONTA, NEW YORK**

# NEW YORK STATE MUSIC CAMP

The New York State Music Camp is a private camp, sponsored by Hartwick College as a part of its summer cultural and recreational program. It is a junior Tanglewood, for the music buff or talented young musician, which in 1984 will celebrate its 38th season. This is a conservatory of music with emphasis given to sports, recreation, and music.

During July and August the campus is alive with music camp students representing several states and foreign

countries. The hillside resounds with live music, from classics to jazz; weekend concerts by the camp's twelve vocal and instrumental groups entertain enthusiastic audiences.

Concerts feature jazz as well as other ensembles. Music ranges from traditional to rock.

## HISTORY

The New York State Music Camp was founded by Dr. Frederic Fay Swift at Otter Lake in

“[She] can't wait to return in '84..has a new and magnificent appreciation of fine music and has grown in many important ways.”

-mother of a first year camper-



the Central Adirondacks in 1947. In 1956 the program moved to the Hartwick College campus where, except for the summers of 1968 and 1969, it has remained.

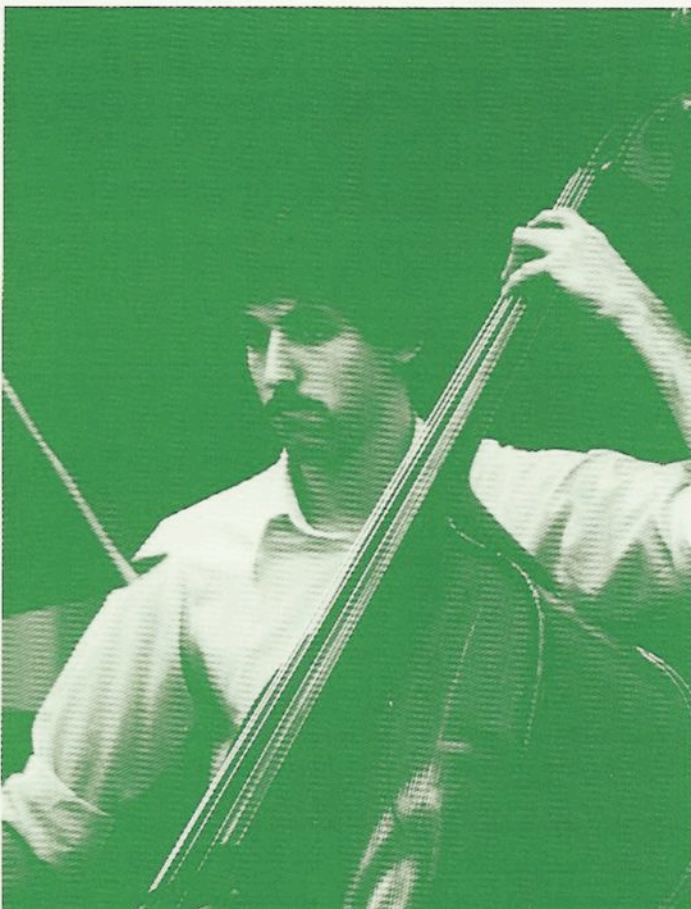
Since 1947, thousands of young musicians representing 40 states and 9 foreign countries have been enrolled in the NYSMC program. Camp alumni may be found in professional orchestras, stage bands, radio and television shows, teaching in schools and colleges, serving as composers and arrangers. But not all alumni become professional musicians. Hundreds of camp alumni are in other professions, each finding music a source of satisfaction and enjoyment.

In 1983, 332 individuals were involved in the camp program. Thirty-

five public performances were given and a total of 314 musical compositions were performed.

## 1984 PROGRAM

Each summer the Music Camp offers the finest in summer recreation with the emphasis on music. In 1984 the program will extend for 6 weeks, from July 1 to August 11. The tradition at NYSMC has made it one of the finest summer music programs in the country, with an exciting schedule for the beginner as well as the proficient performer. Here young people have the opportunity to perform some of the great music from all periods of composition, from classical to modern. Campers, ages ten to





twenty, appear in weekly concerts. (Each year one or two 9-year olds are accepted.)

Daily rehearsals are held for twelve performing organizations: Concert Band, Symphonic Band, Concert Orchestra, Symphony Orchestra,

of them weekly. (See proposed schedule of activities.)

The camp program has been designed to make available a maximum of performances at all levels of proficiency. The NYSMC program is quite unique in that each

“...excellent concerts, discipline and enthusiasm combined and high standards of teachers for talented young people.”

-mother of first year camper-

Chamber Orchestra, Lab Jazz Ensemble, Jazz Ensemble, Chorale, Girls' Choir, Select Choir, Chamber Choir, and Concert Choir. All organizations appear regularly in concerts, six

camper appears in several performing organizations. It is recommended that each camper be enrolled in at least four daily activities in addition to sports and recreation.

“The philosophy that every musician should be both a vocalist and instrumentalist is a really sound one.”

-5th year camper-

Some campers perform in as many as five organizations. Some play more than one instrument. All campers sing in the Concert Choir.

Classes are held in many subjects. Credit may be earned toward high school graduation.

Private instruction is available in all instruments, voice, piano, guitar, electronic music, and pipe organ. There is a small additional charge of \$6.50 for private instruction which

is not included in the camp tuition.

The 1984 camp program will also offer ensemble instruction in piano, cello, strings, woodwind, brass, percussion, guitar and voice. There is no additional charge for ensemble participation.

There is one hour of organized sports each afternoon as well as optional sports and recreation available daily and on prescribed evenings (see proposed evening events).

# PERFORMANCE ORGANIZATIONS

## BANDS

### Concert Band

Composed of wind and percussion campers. Standard band literature, moderately difficult music. (Three concert appearances.)

### Symphonic Band

Membership by audition. Wind and percussion campers. Limited by instrumentation. Professional level performance. Standard band literature. (Weekly concert appearances. \*)

### Chamber Orchestra

Membership by invitation. Standard string literature at the professional level. (Three concert appearances.)

## JAZZ ENSEMBLES

### Lab Jazz Ensemble

For any instrumentalists as called for in the charts. Standard jazz literature. Instruction in improvisation. (Three concert appearances.)



1982 Chorale



1982 Concert Choir

“...outstanding musically, mentally and socially.”  
-4th year faculty member-

## ORCHESTRAS

### Concert Orchestra

For all string players. Wind and percussion campers by invitation. Standard orchestral literature of many periods of composition. (Three concert appearances.)

### Symphony Orchestra

Membership by audition. For string, wind and percussion campers. Limited by instrumentation. Standard symphonic works at the professional level. (Weekly concert appearances. \*)

### Jazz Ensemble

Membership by audition. Professional level. Instrumentation as required by the charts. (Weekly concert appearances. \*)

## CHOIRS

**Chorale** For any singers. Selections include show tunes, American standards, general choral literature. (Three matinee concerts.)

**Girls' Choir** For all female singers. Selections include standard works

for women's voices. (Weekly concert appearances.)

### Concert Choir

Required for all campers. Wide variety of selections including standard choral works. (Weekly concert appearances.)

### Select Choir

Membership by invitation. Sightreading auditions. For advanced singers, counselors and faculty. Sings all types of

## SMALL ENSEMBLES

The 1984 camp program will offer performance opportunities in several small ensembles. Classes are held for piano, string, cello, flute, woodwind, brass, percussion, guitar and vocal groups. Ensembles appear regularly at Camper Recitals and special programs.

“I can safely say that NYSMC has helped me to grow, not only musically but mentally.”  
-5th year camper-

compositions with an emphasis on American standards. (Weekly concert appearances. \*)

**Chamber Choir** For any singers. Repertoire of madrigals, motets, and other works. Mixed voices. (Two concert appearances.)

The choral program at NYSMC allows all vocal majors to perform in at least 3 choirs daily.

The small-ensemble program, inaugurated a few years ago, allows each camper to perform in small groups as well as the major organizations. A member of the administrative staff is assigned to coordinate this program which is supervised on a 5 to 1 camper to coach ratio.

\*Preference is given to qualified campers spending a minimum of 3 weeks in the program.



1982 Symphony Orchestra

## FACILITIES

Hartwick College is located on a 375 acre hillside with a view of Oneonta and the Susquehanna Valley. During the summer, the Music Camp uses several of the campus buildings:

**Anderson Center For The Arts** was completed in 1973. It is

“It gives me a feeling of home.”

-2nd year camper-

an ultra-modern structure, air-conditioned, which houses the college's Music and Art Departments. During Camp, the following facilities are available for use: 4 classrooms, 6 studios, 11 practice modules, The Anderson Theater, Music Circle, 21 pianos: 10 grands including a Steinway Concert Grand, 2 practice organs, a two-manual harpsicord. There are instrument loans and repair facilities, a music reference library, and a listening center with more than 4000 recordings. During the summer of 1984, meals will be served in the art gallery because of extensive renovation to the Dewar Hall facilities.

**Blinder Physical Education Center** was opened in 1968. It contains 2 gyms, a dance studio, a 6-lane bowling alley, an 8-lane swimming pool, racquetball and tennis courts, and the Health Center. It is air-conditioned.

**Dewar Hall**, renovated in 1981, contains the Bookstore, the Mail Room, and lounge areas.

**Shineman Chapel** houses a 2-manual pipe organ and classrooms.

**Smith Halls** serve as dorms for campers. Campers are housed two in a room. There are laundry facilities, a lounge, and TV room.

**Yager Hall**, also air-conditioned, houses the Camp office, four classrooms, and Slade Auditorium where many of the Camp concerts are presented. Most of the 4th floor is given to Camp use during the summer program.



“It's very relaxed, very energetic and a very productive atmosphere.”

-5th year camper-



## TYPICAL DAILY SCHEDULE

- 8:30 AM General Music (pre-High School)  
 Preparatory Theory (pre-High School)  
 Music Theory\* (6-week campers only)  
 Beginning Harmony\* °(6-week campers only)  
 Conducting\* (6-week campers only)  
 History of Music\*  
 Music Appreciation  
 Piano Ensembles  
 Part-time Theory (1)  
 Part-time Conducting (2)  
 Electronic Music†  
 Orchestration & Arranging†
- 9:30 Symphonic Band (audition)  
 String Ensembles  
 Piano Class
- 10:30 Concert Choir (required)
- 11:30 Vocal Ensembles  
 Lab Jazz Ensemble  
 Woodwind Ensembles  
 Flute Ensembles
- LUNCH
- 12:30 Sectionals
- 1:00 PM Symphony Orchestra (audition)  
 Chorale  
 Improvisation Ensemble
- 2:00 Girls' Choir  
 Percussion Ensemble  
 Brass Ensemble
- 3:00 Select Choir (audition)  
 Concert Orchestra  
 Organized Sports  
 Guitar Ensemble (3)
- 4:00 Concert Band  
 Chamber Orchestra (audition)  
 Applied Piano Workshop
- DINNER
- 5:30 Jazz Ensemble
- 7:00 Evening Programs

\* May be taken for ½ unit toward high school graduation.

° Music Theory pre-requisite

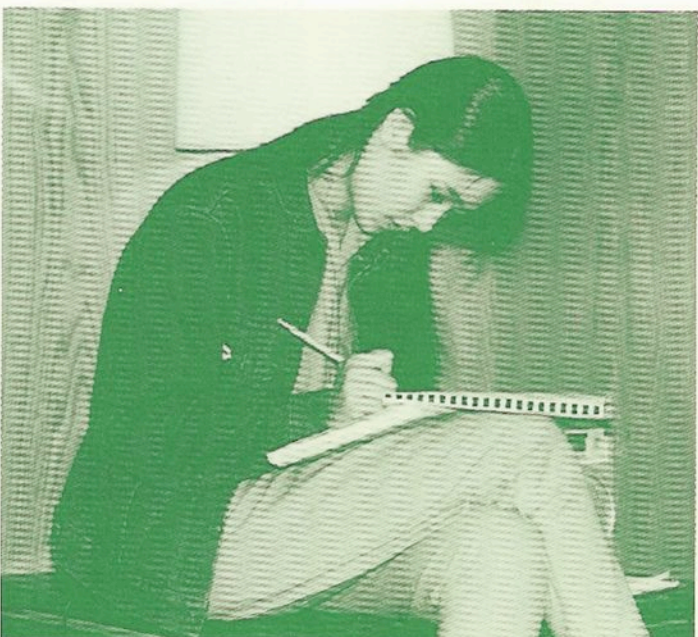
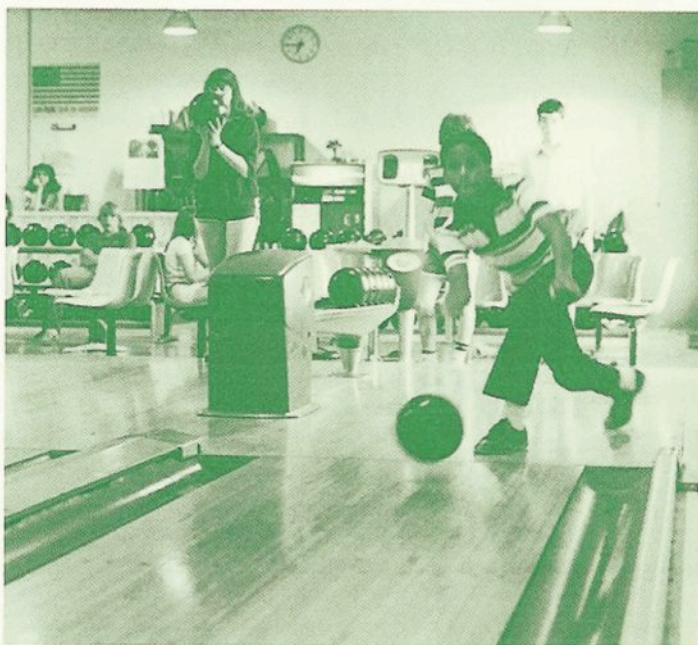
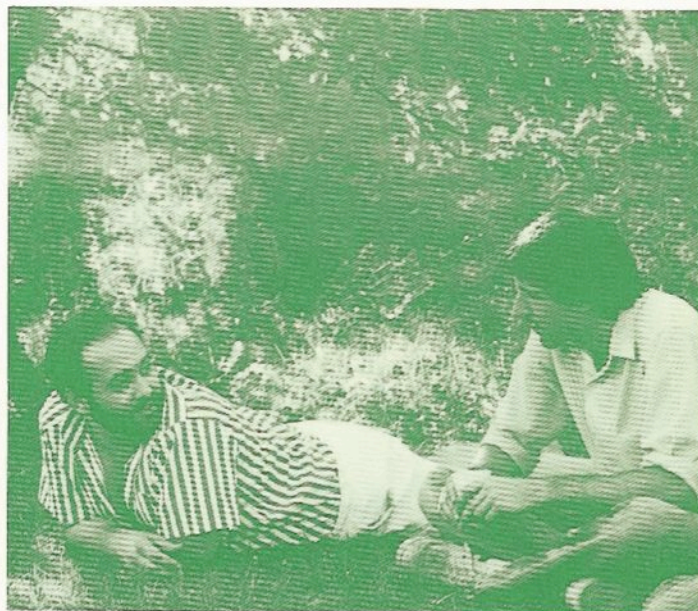
† Music Theory and Harmony pre-requisites

(1) Classes will begin weeks 1 and 3. Campers may only enter then.

(2) Classes will begin weeks 2 and 4. Campers may only enter then.

(3) Classical instruction.

WE SUGGEST 1 WEEK CAMPERS ENROLL IN HISTORY OF MUSIC OR MUSIC APPRECIATION CLASSES.



# PROPOSED 1984 CAMP SCHEDULE

(Subject to change as needed)

## June 27-30 Counselor Workshop

FIRST WEEK	July 1, Sat.	8 PM - "Get together" for returning campers	
	July 2, Sun.	8 PM - Opening Convocation	
	July 3, Mon.	7 PM - Sports Night	
	July 4, Tues.	7 PM - In-Town	
	July 5, Wed.	8 PM - RECITAL	
	July 6, Thurs.	TBA	
	July 7, Fri.	8 PM - Dance	
	July 8, Sat.	3 PM - FACULTY RECITAL	8 PM - CONCERT A
SECOND WEEK	July 9, Sun.	3 PM - CONCERT B	7 PM - Discussion "Why music?"
	July 10, Mon.	7 PM - Sports Night/K-D Test	
	July 11, Tues.	7 PM - In-Town	
	July 12, Wed.	8 PM - RECITAL	
	July 13, Thurs.	8 PM - CONCERT: Ensembles and Chamber Orchestra	
	July 14, Fri.	8 PM - Dance	
	July 15, Sat.	3 PM - MATINEE CONCERT C	8 PM - CONCERT B
THIRD WEEK	July 16, Sun.	3 PM - CONCERT A	Evening Rehearsals
	July 17, Mon.	Half-Day Holiday	
	July 18, Tues.	7 PM - In-Town	
	July 19, Wed.	8 PM - RECITAL	
	July 20, Thurs.	8 PM - CONCERT: Ensembles	
	July 21, Fri.	8 PM - Dance	
	July 22, Sat.	3 PM - FACULTY RECITAL	8 PM - CONCERT A
FOURTH WEEK	July 23, Sun.	3 PM - CONCERT B	7 PM - Discussion "Careers..."
	July 24, Mon.	7 PM - Sports Night	
	July 25, Tues.	7 PM - In-Town	
	July 26, Wed.	8 PM - RECITAL	
	July 27, Thurs.	8 PM - CONCERT: Ensembles and Chamber Orchestra	
	July 28, Fri.	8 PM - Dance	
	July 29, Sat.	3 PM - MATINEE CONCERT C	8 PM - CONCERT B
FIFTH WEEK	July 30, Sun.	3 PM - CONCERT A	Evening Rehearsals
	July 31, Mon.	Half-Day Holiday	TBA
	Aug. 1, Tues.	7 PM - In-Town	
	Aug. 2, Wed.	8 PM - RECITAL	
	Aug. 3, Thurs.	8 PM - CONCERT: Ensembles	
	Aug. 4, Fri.	8 PM - Dance	
Aug. 5, Sat.	3 PM - FACULTY RECITAL	8 PM - CONCERT A	
SIXTH WEEK	Aug. 6, Sun.	3 PM - CONCERT B	7 PM - Discussion "Your future"
	Aug. 7, Mon.	7 PM - Camp Quiz	
	Aug. 8, Tues.	8 AM - Final Exams	7 PM - Faculty/Camper V'ball
	Aug. 9, Wed.	8 PM - RECITAL	
	Aug. 10, Thurs.	9 AM - Recording Sessions	8 PM - Counselor Show
	Aug. 11, Fri.	3 PM & 7:30 PM - FINAL CONCERT C, A and B	
	Aug. 12, Sat.	1984 Camp Season ENDS	

**CONCERT A:** Jazz Ensemble, Select Choir, Symphonic Band

**CONCERT B:** Girls' Choir, Symphony Orchestra, Concert Choir

**CONCERT C:** Chorale, Lab Jazz Ensemble, Concert Band, Concert Orchestra



“ I have never been more satisfied with any other camp.”

-3rd year camper-

advisor will be available on a class and individual basis to offer financial guidance help for those considering a college education. Parents and campers are welcome. In 1983 over 75 individuals were served in this program.

members available to cover a wide variety of subjects. An additional fee is charged for this service, and payments are arranged between the parents and the instructor.

## **SOCIAL AND RECREATIONAL PROGRAMS**

## **TUTORING**

Parents who wish to have children tutored in academic subjects may arrange to do so through the camp director. There are many college and public school faculty

The social and recreational programs are organized and supervised by the counselors. Each dormitory floor has its own counselors and senior counselor who

## **CONCERTS-RECITALS**

Concerts and recitals are given in the Yager Hall Slade Auditorium and in the Anderson Center for the Arts. Both auditoriums are air-conditioned. Most evening programs, except the final concert, begin at 8 o'clock. Afternoon matinees begin at 3 o'clock. All programs are presented free of charge. The public is invited.

earn toward high school graduation have been accepted in several states besides New York. In 1983, 53 campers earned such credit.

## **TESTING**

Each camper is given the opportunity to take a standard music aptitude test (Kwalwasser-Dykema). Scores and written interpretations are given without charge.

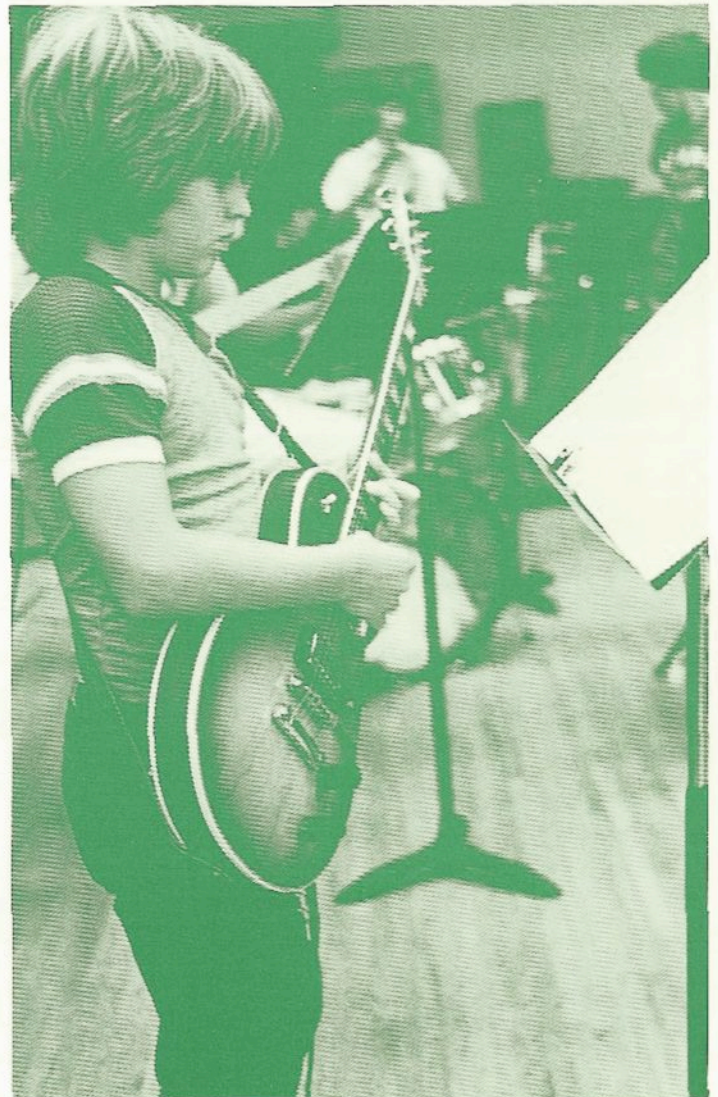
This is given during the 2nd week of Camp.

## **CLASSES**

Each camper is enrolled in one class. Textbooks may be purchased in the College Bookstore at an average cost of less than \$4.00. All teachers of accredited subjects are certified. Credits campers

## **MUSIC COUNSELING SERVICE—FINANCIAL AID**

A competent financial aid



“ I learn more here in the six weeks than in an entire school year.”

-3rd year camper-



guide and encourage camper participation. Students write and publish HI-NOTE, the summer camper publication, and arrange for the CAMP FORMAL which follows the final concert. Campers are encouraged to spend at least 3 hours each week in sports and related activities.

## HEALTH PROGRAM

There is a medical clinic staffed by RN's on campus. All campers are required to check with the counselors, who advise the Health Clinic in case of illness or accident.

## INSURANCE

Parents are advised to provide health insurance for their children attending camp. In case of illness when campers need a physician or a visit

to Fox Hospital, charges will be made by the doctors directly to the parents.

Accident insurance is provided by the College with the first \$25 being charged to the parents; this is secondary insurance for accidental injury occurring during the period when the camper is on campus.

## SPORTS

An organized sports program is offered each afternoon. Those who wish to may swim in the 8-lane pool in the Binder Physical Education Center. On-campus activities include bowling, squash, tennis (14 courts), racquetball, softball, volleyball, badminton, etc. One of the Camp staff is in charge of the sports signups, and an accredited physical education instructor is in residence.

*"...an atmosphere where I could grow and be myself."*

*-5th year camper-*



*"I am very pleased with the faculty and the way in which the camp is run."*

*-3rd year camper-*

## CAMP DRESS

Campers dress in slacks, shorts, sportswear. Short-shorts are not permitted at any time. Concerts are

semi-formal . . . campers wear dresses, sports jackets, ties when performing. For the final concert and dance, party dresses for the girls are recommended.

Because of the many public concerts, campers should bring sufficient suitable clothing.

## MAIL

Mail is delivered each day (Monday-Friday) to the dormitories. Address: Camper's name, New York State Music Camp, Smith Hall, Hartwick College, Oneonta, NY 13820.

## LAUNDRY

Laundry facilities are available in each



## CAMP BANK

The Camp Bank is located in the Camp office. Campers may withdraw funds on their signatures. The Bank is open from 9 AM to 2 PM Monday-Saturday. Money should not be kept in dormitory rooms.

“The atmosphere is so friendly and warm...people, especially the counselors, are..unselfish. There’s a great deal..of positive energy, caring and concern for other people.”

-5th year camper-

## WHAT TO BRING TO CAMP

Each camper should provide the following: towels, pillows, sheets (single beds), pillow cases, 2 blankets, sweaters, raincoat, bathing suit, and other personal items. Campers may bring radios and record players. There are TV lounges in the dorms.

## FACULTY

In addition to the counselors, there were 18 faculty members involved in the 1983 program. Their average number of years at NYSMC was 9.38. Twenty-four were certified teachers. Six were professional artist-teachers.

## COUNSELING STAFF

Most counselors are selected from former campers who have participated in the NYSMC program and are familiar with its policies, practices, and

A three-day workshop is conducted prior to the opening of camp to acquaint counselors with their responsibilities. Members of the Hartwick Security and Health services are involved. There were 23 individuals on the counseling staff in 1983

with an average of 4.34 years attendance at the Camp. Ratio is about 1 counselor to 6 resident campers.

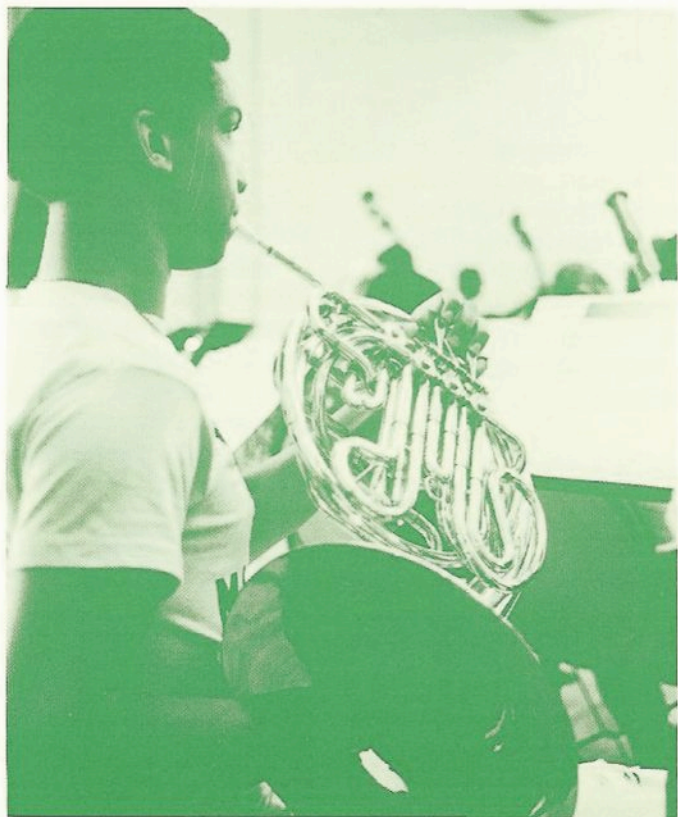
Counselors are trained in helping young people deal with normal developmental crises, as well as in responding to medical and safety emergencies. They are superior musical performers, many of whom are teachers, and most perform along with the students, aiding them in difficult passages.

## THE 1983 CAMP

There were 332 individuals involved in the 1983 camp. The ages ranged from 9 to 18. There were 164 former campers enrolled, several as counselors and members of the faculty.

During the summer the following were enrolled:

Flute-Piccolo-71, Eb Clarinet-1, Bb Clarinet-42, Alto Clarinet-1, Bass Clarinet-3, Contra Alto Clarinet-1, Oboe-7, Bassoon-8, Saxophone-25, Horn-13, Trumpet/Cornet-28, Fluegel Horn-3 Baritone



“The counselors are great—prepared for anything.”  
-2nd year camper-

Tuba-7, Percussion-24, Violin-35, Viola-11, ‘Cello-8, Bass-4, Guitar-17, Banjo-1, Voice (Lessons only) 32, Piano (Lessons only) 32, Organ (Lessons only) 7, Electronic Music (Lessons only) 25, Arranging (Lessons only) 2, Improvisation (Lessons only) 2. A total of 1092 private lessons were given.

During the summer 35 public performances were given, a few of these in church worship services. The following were performed in public:

### SOLOS

Baritone Horn-1, Cello-5, Clarinet-1, Flute-10,

Guitar-2, Horn-2, Marimba-3, Oboe-1, Percussion-1, Piano-11, Recorder-1, Saxophone-1, String Bass-2, Trombone-1, Trumpet-2, Viola-1, Violin-2, Vocal-22. In addition, campers provided solos at five church services. (69)

### ENSEMBLES

Brass Choir-10, Small Brass-2, Double Reed-1, Flute-1, Cello-2, Horn-4, Jazz (small)-4, Marimba Band-1, Marimba (small)-1, Mixed-3, Percussion-5, String-7, String Bass-1, Trombone Choir-1, Tuba Quartet-1, Violin-1, Vocal-4, Woodwind-10. (59)

“This year has been fantastic!!!”

-5th year camper-

## MUSIC ORGANIZATIONS

Bands-25 including some major works, Choirs-87 (including major portion of ELIJAH), Jazz Ensembles-38, Orchestras-36 (including major works and movements of symphonies.) (186)

The 1983 recording is indicative of the quality of all organizations. Each selection performed was presented in a public concert.

## APPLICATIONS

Applications are accepted in the order received. Because of large enrollments some weeks in 1983, it is reasonable

**“There’s a lot of love involved in doing things.”**  
-2nd year camper-

to believe that it will be impossible to accept every application in 1984. Dorm space is limited and a resident camp of 160 for any one week is maximum.

Six-week applications will be given preference and others will be accepted as space is available. Early enrollment, and acceptance is advised.

## TUITION

Hartwick College operates the New York State Music Camp on a non-profit, one-tuition fee basis.

Tuition covers: lodging, meals, enrollment in class, participation in organizations, sports and

individualized guidance program, recitals and concerts. Tuition does not cover: private lessons, linen service, textbooks, laundry, health insurance or insurance on instruments.

For those who register, pay the \$50.00 registration fee, and balance in one payment when camper arrives, the following rates apply:

One week	\$175.00
Two weeks	350.00
Three weeks	500.00
Four weeks	655.00
Five weeks	805.00
Six weeks	945.00

For day campers, the tuition, which includes noon lunches, is \$65.00 a week. Total for six weeks is \$370.00.

Campers may enroll for any week or combination of weeks when facilities are available.



1982 Jazz Ensemble



1982 Lab Jazz Ensemble

Fifty dollars should accompany the application. This is part of the tuition payment. Checks should be made out to Dr. F.F. Swift, Sr. Camp Director, and sent to 17 Suncrest Terrace, Oneonta, NY 13820

Payment of the balance of the tuition should be made when the camper arrives at camp and registers. These checks should be made out to Hartwick College.

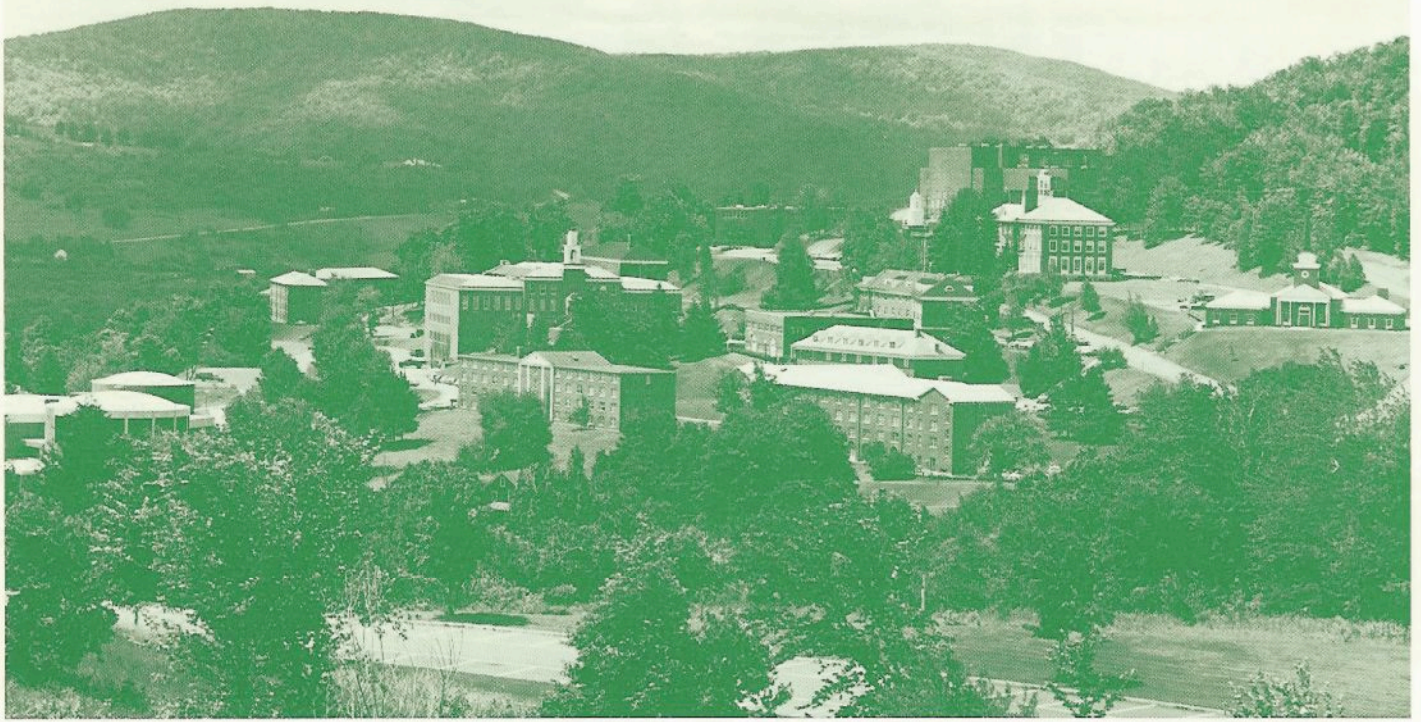
In cases where two or more campers come from the same family, there will be a 10% tuition reduction on the six-week program for the 2nd and 3rd child.

The 1984 Camp program will operate from July to August 11.

For additional information write to:\*

**Dr. F.F. Swift,  
Sr. Camp Director  
New York State  
Music Camp  
17 Suncrest Terrace  
Oneonta, New York  
13820**

\*Winter Address: (Jan 1-March 31, 1984)  
16-107 Vista Gardens  
Trail, Vero Beach, Fl.  
32962.

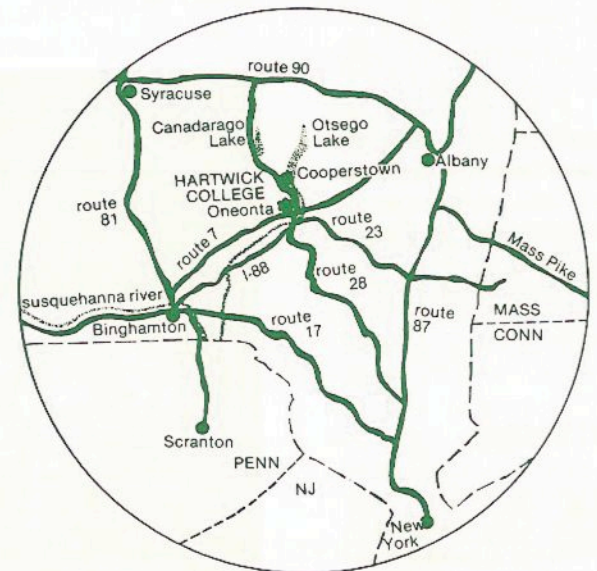


## ABOUT HARTWICK COLLEGE

Located on the northern edge of the Catskills, Hartwick College is a 4-year, co-educational, liberal arts college offering individually designed programs in addition to 28 major areas of concentration in 18 different departments. Study opportunities extend beyond the campus to include many settings in the United States and Europe.

The hillside campus, with a 30-mile view of the beautiful Susquehanna Valley, overlooks the city of Oneonta.

**Oneonta**, a city of 16,000, is equidistant from Utica, Albany, Kingston and Binghamton (approximately 60 miles), and is 190 miles northwest of New York City. Major bus lines maintain schedules to Oneonta from Albany, Utica, New York City, Binghamton and Cortland. Catskill Airways operates three round-trip flights daily between LaGuardia Airport in New York City and Oneonta.



Hartwick College does not discriminate on the basis of race, color, national origin, sex, religion or handicap ability in its policies and programs of admissions, financial aid, instruction, athletics and other college-administered activities.