



NEW YORK STATE MUSIC CAMP

36th Season • July 4 through August 14, 1982

OPERATED BY HARTWICK COLLEGE, ONEONTA, NEW YORK

NEW YORK STATE MUSIC CAMP

The New York State Music Camp is a private camp, sponsored by Hartwick College as a part of its summer cultural and recreational program. It is a junior Tanglewood for the music buff or talented young musician, which in 1982 will celebrate its 36th season. This is a conservatory of music with emphasis given to sports, recreation, and music.

During July and August the campus is alive with music camp students representing several states and foreign countries. The hillside resounds with live music, from classics to jazz; weekend concerts by the camp's eleven vocal and instrumental groups entertain enthusiastic audiences.

Concerts feature jazz as well as other ensembles. Music ranges from traditional to rock.



HISTORY

The New York State Music Camp was founded by Dr. Frederic Fay Swift at Otter Lake in the Central Adirondacks in 1947. In 1956 the program moved to the Hartwick College Campus where, except for the summers of 1968 and 1969, it has remained.

Since 1947, thousands of young musicians representing 39 states and 8 foreign countries have been enrolled in the NYSMC program. Camp alumni may be found in professional orchestras, stage bands, radio and television shows, teaching in schools and colleges, serving as composers and arrangers. But not all alumni become professional musicians. Hundreds of camp alumni are in other professions, each finding music a source of satisfaction and enjoyment.

In 1981, 307 individuals were involved in the camp program. Thirty-four public performances were given and a total of 314 different musical compositions were performed.

1982 PROGRAM

Each summer the Music Camp offers the finest in summer recreation with the emphasis on music. In 1982 the program will extend for 6 weeks, from July 4 to August 14. The tradition at NYSMC has made it one of the finest summer music programs in the country, with an exciting schedule for the beginner as well as the proficient performer. Here young people have the opportunity to perform some of the great music from all periods of composition, from classical to modern. Campers, ages ten to twenty, appear in weekly concerts. (Each year one or two 9-year olds are accepted.)

Daily rehearsals are held for eleven performing organizations: Concert Band, Symphonic Band, Concert Orchestra, Symphony Orchestra, Chamber Orchestra, Lab Jazz Ensemble, Jazz Ensemble, Chorale, Girls' Choir, Select Choir, and Concert Choir. All organizations appear regularly in concerts, six of them weekly. (See proposed schedule of activities.)

The camp program has been designed to make available a maximum of performances at all levels of proficiency. The NYSMC program is quite uni-

que in that each camper appears in several performing organizations. It is recommended that each camper be enrolled in at least four daily activities in addition to sports and recreation. Some campers perform in as many as five organizations. Some play more than one instrument. All campers sing in the Concert Choir.

Classes are held in many subjects. Credit may be earned toward high school graduation.

Private instruction is available in all instruments, voice, piano, guitar, pipe organ and harp. There is a small additional charge of \$6.00 for private instruction which is not included in the camp tuition.

The 1982 camp program will also offer ensemble instruction in piano, cello, strings, woodwind, brass, percussion, guitar and voice. There is no additional charge for ensemble participation.

There is a sports and recreation program supervised by a sports coordinator and the college physical education staff. Included is a daily swimming program in Hartwick's 8-lane 25-yard indoor pool.



PERFORMANCE ORGANIZATIONS

BANDS

Concert Band Composed of wind and percussion campers. Standard band literature, moderately difficult music. (Three concert appearances).

Symphonic Band Membership by audition. Wind and percussion campers. Limited by instrumentation. Professional level performance. Standard band literature. (Weekly concert appearances. *)

ORCHESTRAS

Concert Orchestra For all string players. Wind and percussion campers by invitation. Standard orchestral literature of many periods of composition. (Three concert appearances).

Symphony Orchestra Membership by audition. For string, wind and percussion campers. Limited by instrumentation. Standard symphonic works at the professional level. (Weekly concert appearances. *)

Chamber Orchestra Membership by invitation. Standard string literature at the professional level. (Two concert appearances.)

JAZZ ENSEMBLES

Lab Jazz Ensemble For any instrumentalists as called for in the charts. Standard jazz literature. Instruction in improvisation. (Three concert appearances.)

Jazz Ensemble Membership by audition. Professional level. Instrumentation as required by the charts. (Weekly concert appearances. *)

CHOIRS

Chorale For any singers. Selections include show tunes, American standards, general choral literature. (Three matinee concerts).

Girls' Choir For all female singers. Selections include standard works for women's voices. (Weekly concert appearances.)

Concert Choir Required for all campers. Wide variety of selections including standard choral works. (Weekly concert appearances.)



Select Choir Membership by invitation. Sight-reading auditions. For advanced singers, counselors and faculty. Sings all types of compositions with an emphasis on American standards. (Weekly concert appearances. *)

* Preference is given to qualified campers spending a minimum of 3 weeks in the program.

SMALL ENSEMBLES

The 1982 camp program will offer performance opportunities in several small ensembles. Classes are held for piano, string, cello, flute, woodwind, brass, percussion, guitar and vocal groups. Ensembles appear regularly at Camper Recitals and special programs.

FACILITIES

Hartwick College is located on a 175 acre hillside with a view of Oneonta and the Susquehanna Valley. During the summer, the Music Camp uses several of the campus buildings:

ANDERSON CENTER FOR THE ARTS was completed in 1973. It is an ultra-modern structure, air-conditioned, which houses the college's Music Department. During Camp, the following facilities are available for use: 4 classrooms, 6 studios, 11 practice modules, The Anderson Theater, Music Circle, 21 pianos: 10 grands including a Steinway Concert Grand, 2 practice organs, a two-manual harpsicord. There are instrument loan and repair facilities, a music reference library, and a listening center with more than 4000 recordings.

BINDER PHYSICAL EDUCATION CENTER was opened in 1968. It contains 2 gyms, a dance studio, a 6-lane bowling alley, an 8-lane swimming



pool, racquetball and tennis courts, and the Health Center. It is air-conditioned.

DEWAR HALL, renovated in 1981, contains the Commons, the Bookstore, the Mail Room, and lounge areas. Campers eat their meals in the Commons.

SHINEMAN CHAPEL houses a 3-manual pipe organ and classroom.

SMITH HALLS serve as dorms for campers. Campers are housed two in a room. There are laundry facilities, a lounge, and TV room.

YAGER HALL, also air-conditioned, houses the Camp office, four classrooms, and Slade Auditorium where many of the Camp concerts are presented. Most of the 4th floor is given to Camp use during the summer program.



TYPICAL DAILY SCHEDULE

8:15 am	(Pre High School) General Music Preparatory Theory (High School) Music Theory * Harmony * # Conducting * History of Music * Music Appreciation-Art Culture Piano Class (Intermediate and Advanced Campers) Late-Entry Theory Late-Entry Conducting
9:15	Symphonic Band String and Piano Ensembles
10:15	Concert Choir (Required for all campers)
11:15	Lab Jazz Ensemble Woodwind Ensembles
12:30	Sectional Rehearsals (As scheduled)
1:00 pm	Symphony Orchestra Chorale
2:00	Girls' Choir Percussion Ensemble Sports
3:00	Select Choir Concert Orchestra Sports
4:00	Concert Band Chamber Orchestra Vocal Ensembles Sports Vocal Ensembles
5:30	Jazz Ensemble Brass Ensembles
7:00	Evening Programs

* Campers may earn one-half unit credit toward high school graduation.

Prerequisite-Music Theory.



Campers using the sports and recreation program.

PROPOSED 1982 CAMP SCHEDULE

(Subject to change as needed)

June 29-30, July 1-2 Counselor Workshop

FIRST WEEK

July

- 3 (Sat) Registration former campers.
- 4 (Sun) Registration of new campers, opening convocation, auditions.
- 5 (Mon) Faculty Recital
- 6 (Tue) In Town
- 7 (Wed) Camper Recital
- 8 (Thur) Sports Night
- 9 (Fri) TBA
- 10 (Sat) Concert: Program "A"

SECOND WEEK

- 11 (Sun) Registration, Concert: Program "B"
- 12 (Mon) Faculty Piano Recital
- 13 (Tue) In Town
- 14 (Wed) Camper Recital
- 15 (Thur) Sports Night
- 16 (Fri) Concert: Ensembles and Chamber Orchestra

Parents' Weekend

- 17 (Sat) Matinee Concert (3PM): Program "C" Evening Concert: Program "B"

THIRD WEEK

- 18 (Sun) Registration, Concert: Program "A" Evening rehearsals
- 19 (Mon) Half-day Picnic, Faculty Harp Recital.
- 20 (Tue) In Town
- 21 (Wed) Camper Recital
- 22 (Thur) TBA
- 23 (Fri) Sports Night
- 24 (Sat) Matinee Concert (3 PM): Bell Choirs and Ensembles Evening Concert: Program "A"

FOURTH WEEK

July

- 25 (Sun) Registration, Concert: Program "B"
- 26 (Mon) Faculty Recital: Voice
- 27 (Tue) In Town
- 28 (Wed) Camper Recital
- 29 (Thur) TBA
- 30 (Fri) Sports Night

Parents Weekend

- 31 (Sat) Matinee Concert (3 PM): Program "C" Evening Concert (7:30): Bell Choirs and Program "B"

FIFTH WEEK

August

- 1 (Sun) Registration, Concert: Program "A"
- 2 (Mon) Faculty Recital: Flute
- 3 (Tue) In Town
- 4 (Wed) Camper Recital
- 5 (Thur) TBA
- 6 (Fri) TBA
- 7 (Sat) Registration, Matinee Concert (tentative) Evening Concert: Program "A"

SIXTH WEEK

- 8 (Sun) Concert: Program "B"
- 9 (Mon) Camp Quiz
- 10 (Tue) Final Examinations, Concert: Chamber Orchestra and ensembles including piano.
- 11 (Wed) Final Camper Recital (7:30 PM)
- 12 (Thur) Recording session Counselor program
- 13 (Fri) Matinee Concert (3 PM): Program "C" Final Concert (7:30 PM): Programs "A" and "B" Introduction of faculty and staff. Awarding of scholarships and prizes
- 14 (Sat) 36th camp season ends. Breakfast is last meal on contract.

Program "A": Girls' Choir, Symphony Orchestra, Concert Choir

Program "B": Jazz Ensemble, Select Choir, Symphonic Band

Program "C": Lab Jazz Ensemble, Chorale, Concert Band and Concert Orchestra



Concert Choir 1981

CONCERTS-RECITALS

Concerts and recitals are given in the Yager Hall Slade Auditorium and in the Anderson Center for the Arts. Both auditoriums are air-conditioned. Most evening programs, except the final concert, begin at 8 o'clock. Afternoon matinees begin at 3 o'clock. All programs are presented free of charge. The public is invited.

CLASSES

Each camper is enrolled in one class. Textbooks may be purchased in the College Bookstore at an average cost of less than \$4.00. All teachers of accredited subjects are certified. Credits campers earn toward high school graduation have been accepted in several states besides New York. In 1981, 37 campers earned such credit.

TESTING

Each camper is given the opportunity to take a standard music aptitude test(Kwalwasser-Dykema). Scores and written interpretations are given without charge.

MUSIC COUNSELING SERVICE — FINANCIAL AID

A competent financial aid advisor will be available on a class and individual basis to offer financial guidance help for those considering a college education. Parents and campers are welcome. In 1981 over 75 individuals were served in this program.

TUTORING

Parents who wish to have children tutored in academic subjects may arrange to do so through the camp director. There are many college and public school faculty members available to cover a wide variety of subjects. An additional fee is charged for this service, and payments are arranged between the parents and the instructor.

SOCIAL AND RECREATIONAL PROGRAMS

The social and recreational programs are organized and supervised by the counselors. Each dormitory floor has its own counselors and senior counselor who guide and encourage camper participation. Students write and publish HI-NOTE, the summer camper publication, and arrange for the CAMP FORMAL which follows the final concert. Campers are scheduled to spend at least 3 hours each week in sports and related activities.

HEALTH PROGRAM

There is a medical clinic and resident nurse on campus. All campers are required to check with the counselors, who advise the Health Clinic in case of illness or accident. In case medical or hospital services are needed, the charge will be billed to parents. Insurance is provided by the camp with a \$25.00 deductible clause. Bills will be sent to parents, who pay the first \$25.00 charge and forward the bill to the camp director. The insurance carrier will pay the remainder. Campers who wish to obtain additional insurance should do so before leaving home. There are several physicians affiliated with Hartwick College facilities and Fox Hospital, and they are available when needed.

SPORTS

An organized sports program is offered each afternoon. Those who wish to may swim in the 8-lane pool in the Binder Physical Education Center. On-campus activities include bowling, squash, tennis (14 courts), racquetball, softball, volleyball, badminton, etc. One of the Camp staff is in charge of the sports signups, and an accredited physical education instructor is in residence.

CAMP DRESS

Campers dress in slacks, shorts, sportswear. Short-shorts are not permitted at any time. Concerts are semi-formal . . . campers wear dresses, sports jackets, ties when performing. For the final concert and dance, party dresses for the girls are recommended.

Because of the many public concerts, campers should bring sufficient suitable clothing.

MAIL

Mail is delivered each day (Monday-Friday) to the dormitories. Address: Camper's name, New York State Music Camp, Hartwick College, Oneonta, NY 13820.



Symphony Orchestra 1981

LAUNDRY

Laundry facilities are available in each dormitory.

CAMP BANK

The Camp Bank is located in the Camp office. Campers may withdraw funds on their signatures. The Bank is open from 9 AM to 2 PM Monday-Saturday. Money should not be kept in dormitory rooms.

WHAT TO BRING TO CAMP

Each camper should provide the following: towels, sheets (single beds), pillow cases, 2 blankets, sweaters, raincoat, bathing suit, and other personal items. Campers may bring radios and record players. There are TV lounges in the dorms.

FACULTY

In addition to the counselors, there were 25 faculty members involved in the 1981 program. The average number of years at NYSMC was 8.19. Twenty-five were certified teachers. Six were professional artist-teachers.

COUNSELING STAFF

Most counselors are selected from former campers who have participated in the NYSMC program and are familiar with its policies, practices, and philosophy.

A three-day workshop is conducted prior to the opening of camp to acquaint counselors with their responsibilities. Members of the Hartwick Security and Health services are involved.

There were 23 individuals on the counseling staff in 1981 with an average of 4.2 years attendance at the Camp. Ratio is about 1 counselor to 6 resident campers.

THE 1981 CAMP

There were 307 individuals involved in the 1981 camp. The age ranged from 9 to 19. Average age was 14.23. There were 109 former campers returning in 1981.

During the summer the following were enrolled: Piccolo 7, Flute 68, Alto Flute 1, Eb Soprano

Clarinet 1, Bb Clarinet 46, Alto Clarinet 2, Bass Clarinet 4, Contra Alto Clarinet 1, Oboe 6, Bassoon 7, Contra Bassoon 1, Saxophone 18, French Horn 18, Cornet-Trumpet 21, Fluegel Horn 2, Trombone 14, Baritone Horn 6, Tuba 9, Percussion 16, Guitar 8, Fret bass 5, Violin 38, Viola 11, Cello 10, Bass 8, Harp 3, Piano (lessons only) 39, Voice (lessons only) 15, Organ (lessons only) 4).

During 1981 camp program the following selections were performed in public concerts:

Solo instruments-voice 77, Ensembles 52, Bands (2) 24*, Orchestras (3) 35*, Choirs (5) 98, Jazz Ensembles (2) 28. (*Many were major works, movements of symphonies, concert overtures, etc.)

The 1981 Camp recording is indicative of the quality of weekly performances. All selections were recorded as presented in weekly concerts.





Symphonic Band 1981

APPLICATIONS

Applications are accepted in the order received. Because of large enrollments some weeks in 1981, it is reasonable to believe that it will be impossible to accept every application in 1982. Dorm space is limited and a resident camp of 170 for any one week is maximum.

Six-week applications will be given preference and others will be accepted as space is available. Early enrollment, and acceptance is advised.

TUITION

Hartwick College operates the New York State Music Camp on a non-profit, one-tuition fee basis.

Tuition covers: lodging, meals, enrollment in class, participation in organizations, sports and recreation programs, individualized guidance program, recitals and concerts. Tuition does not cover: linen service, textbooks, laundry, insurance on instruments or private lessons.

For those who register, pay the \$25.00 registration fee, and balance in one payment when camper arrives, the following rates apply:

One week	\$150.00
Two weeks	300.00
Three weeks	430.00
Four weeks	560.00
Five weeks	690.00
Six weeks	810.00

For day campers, the tuition, which includes noon lunches, is \$55.00 a week. Total for six weeks is \$310.00.

Campers may enroll for any week or combination of weeks when facilities are available.

Twenty-five dollars should accompany the application. This is part of the tuition payment. Checks should be made out to Dr. F.F. Swift, Sr. Camp Director, and sent to 17 Suncrest Terrace, Oneonta, NY 13820. Payment of the balance of the tuition should be made when the camper arrives at camp and registers. These checks should be made out to Hartwick College.

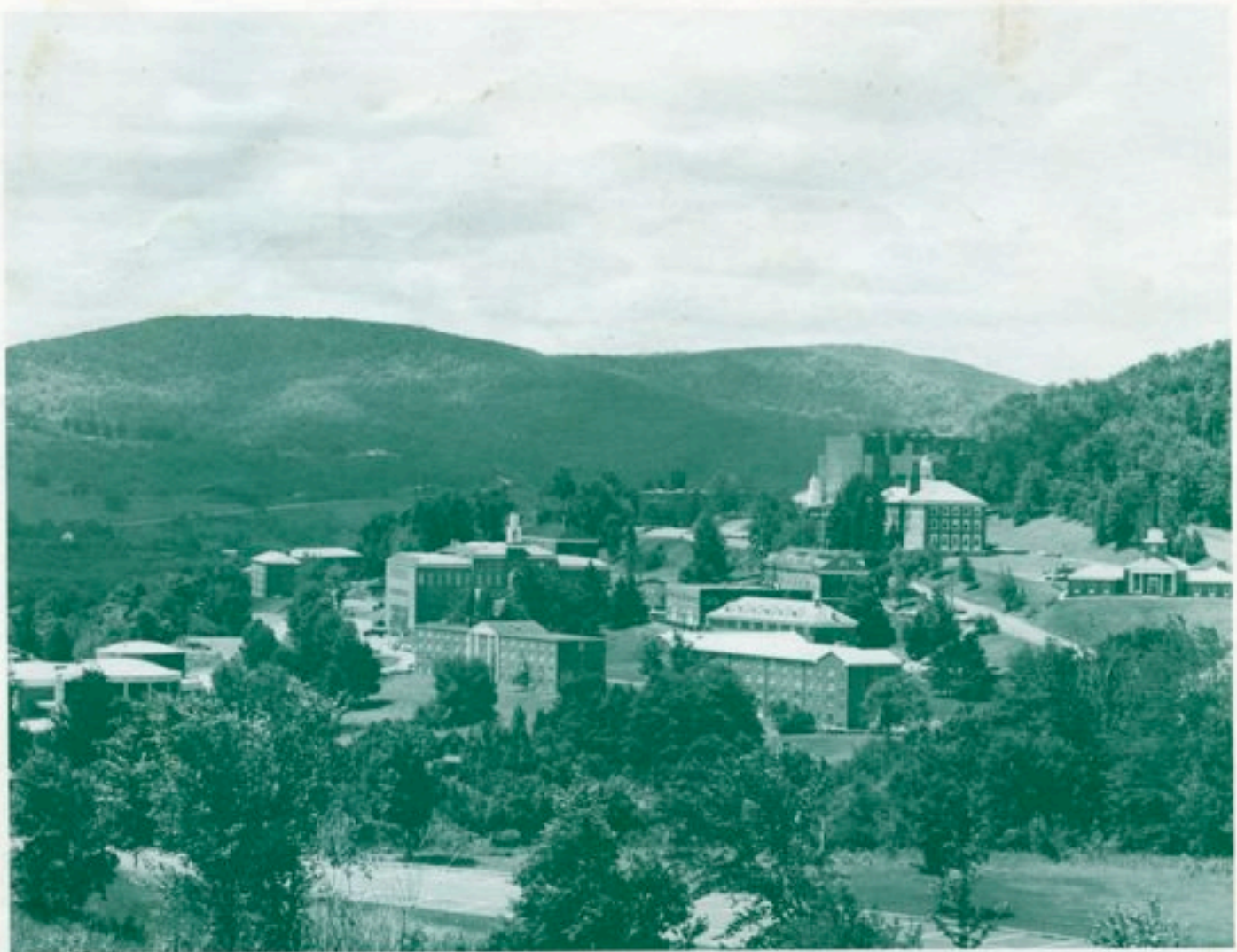
In cases where two or more campers come from the same family, there will be a 10% tuition reduction on the six-week program for the 2nd and 3rd child.

The 1982 Camp program will operate from July 4 to August 14.

For additional information write to:

Dr. F.F. Swift, Sr. Camp Director
New York State Music Camp
17 Suncrest Terrace
Oneonta, New York 13820





ABOUT HARTWICK COLLEGE

Located on the northern edge of the Catskills, Hartwick College is a 4-year, co-educational, liberal arts college offering individually designed programs in addition to 27 major areas of concentration in 17 different departments. Study opportunities extend beyond the campus to include many settings in the United States and Europe.

The hillside campus, with a 30-mile view of the beautiful Susquehanna Valley, overlooks the city of Oneonta.

Oneonta, a city of 16,000, is equidistant from Utica, Albany, Kingston and Binghamton (approximately 60 miles), and is 190 miles northwest of New York City. Major bus lines maintain schedules to Oneonta from Albany, Utica, New York City, Binghamton and Cortland. Catskill Airways operates three round-trip flights daily between LaGuardia Airport in New York City and Oneonta.



Hartwick College does not discriminate on the basis of race, color, national or ethnic origin, sex, religion or handicap ability in its policies and programs of admissions, financial aid, instruction, athletics and other college administered activities.